



Chiswick High Road, London, W4 3AY

Guide Price £650,000

**WHITMAN & CO.**

SALES · LETTINGS · COMMERCIAL



- Spectacular 93' garden
- Fantastic transport links
- Close to all amenities
- Large ground floor flat
- Two double bedrooms with ensuites
- No chain

Tenure - Leasehold  
 Lease length - 160 Years remaining  
 Ground Rent - Peppercorn  
 Service Charge - 1/3 of Outgoings  
 Local authority - Hounslow  
 Council tax - Band A

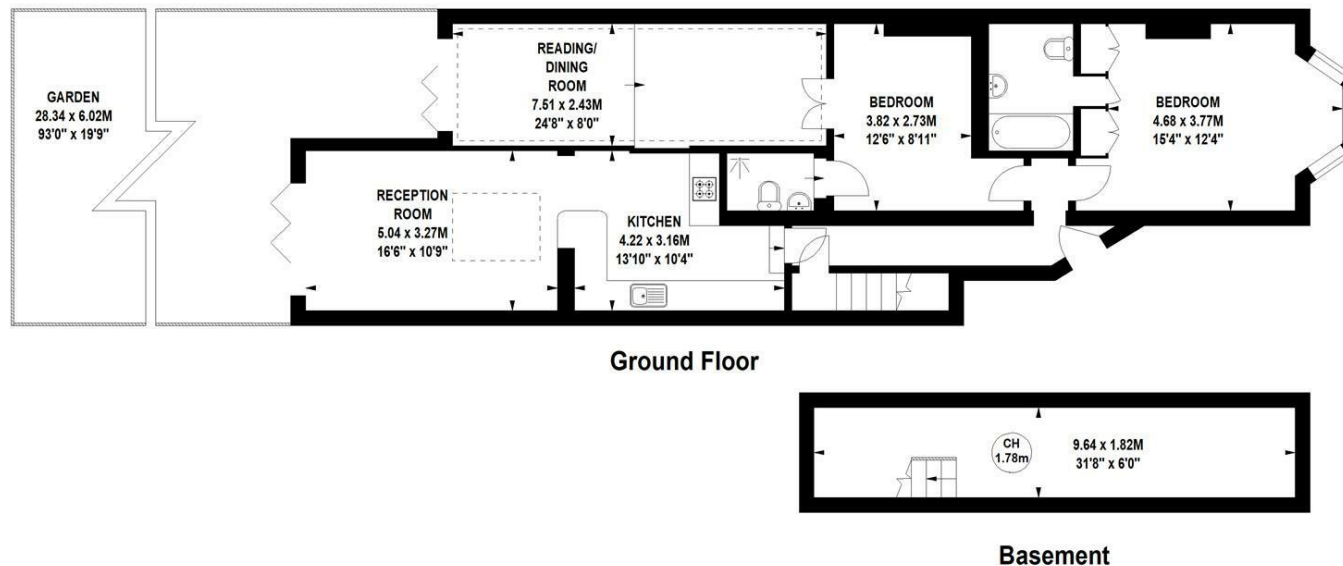
## THE PROPERTY

An exceptionally large two bedroom/two bathroom garden flat offering an excellent balance of living and entertaining space close to numerous amenities. This superb flat comprises two double bedrooms (both with ensuites), 16' reception room, fully fitted kitchen/breakfast room, 24' dining room/conservatory, cellar and a spectacular 90' landscaped garden. Situated within close proximity to the historic strand on the green, Kew Bridge station and numerous bus routes as well as the extensive shopping facilities on Chiswick High Road. No chain.

### Chiswick High Road, W4

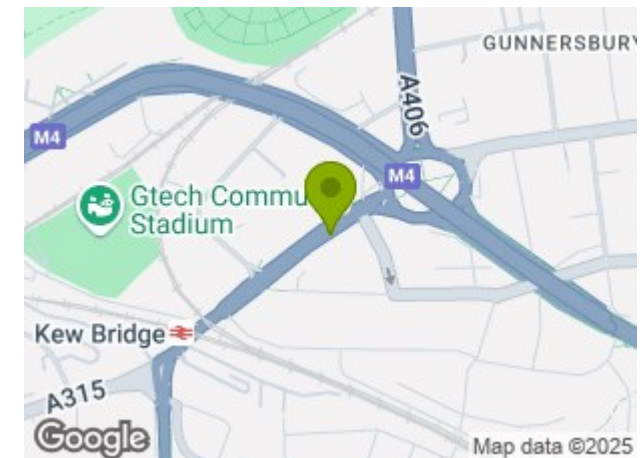
Approximate gross internal area  
 114.92 sq m / 1237 sq ft

Key :  
 CH - Ceiling Height



Not to scale, for guidance only and must not be relied upon as a statement of fact.  
 All measurements and areas are approximate only

## SITUATION



5-7 Turnham Green Terrace, Chiswick, London, W4 1RG

Tel 020 8747 8800

E-mail [sales@whitmanandco.com](mailto:sales@whitmanandco.com)

Website [www.whitmanandco.com](http://www.whitmanandco.com)